

WHEN RECORDED RETURN TO:
WHITE BEAR ANKELE TANAKA & WALDRON
2154 East Commons Avenue, Suite 2000
Centennial, CO 80122

Resort Area Development Metropolitan District No. 6
(Town of Winter Park, Grand County, Colorado)

SPECIAL DISTRICT PUBLIC DISCLOSURE
Pursuant to § 32-1-104.8 C.R.S.

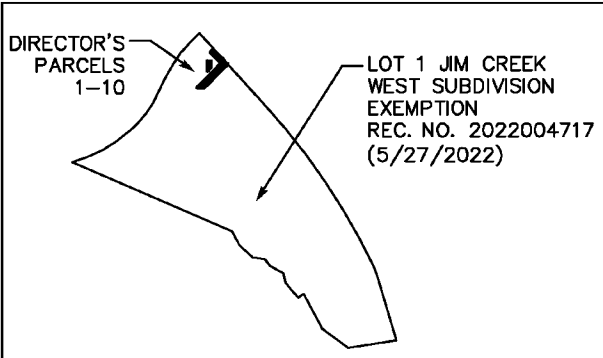
Name of District:	Resort Area Development Metropolitan District No. 6 ("District")
Powers of the District:	All powers authorized in § 32-1-1004, C.R.S., including, but not limited to, fire protection, mosquito control, parks or recreational facilities or programs, traffic and safety controls, sanitation services, street improvements, television relay and translator facilities, transportation, water services, and solid waste disposal, subject to the limitations contained in the District's Service Plan.
Service Plan:	The District's Service Plan, which can be amended from time to time, includes a description of the District's powers and authority. A copy of the District's Service Plan is available from the Division of Local Government.
	Resort Area Development Metropolitan District No. 6 is authorized by Title 32 of the Colorado Revised Statutes to use a number of methods to raise revenues for capital needs and general operations costs. These methods, subject to the limitations imposed by section 20 of Article X of the Colorado Constitution, include issuing debt, levying taxes, and imposing fees and charges. Information concerning directors, management, meetings, elections and current taxes are provided annually in the Notice to Electors described § 32-1-809(1), C.R.S., which can be found at the District office, on the District's web site, on file at the Division of Local Government in the State Department of Local Affairs, or on file at the office of the clerk and recorder of each county in which the special district is located.
District Boundaries:	A map of the District's boundaries is attached hereto as Exhibit A. Please note that the District's boundaries may change from time to time. Please contact the District for the latest information.

EXHIBIT A
District Boundary Map

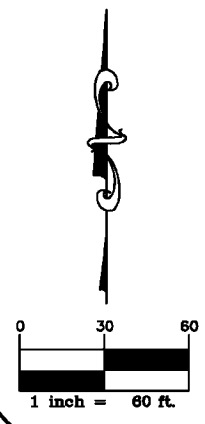
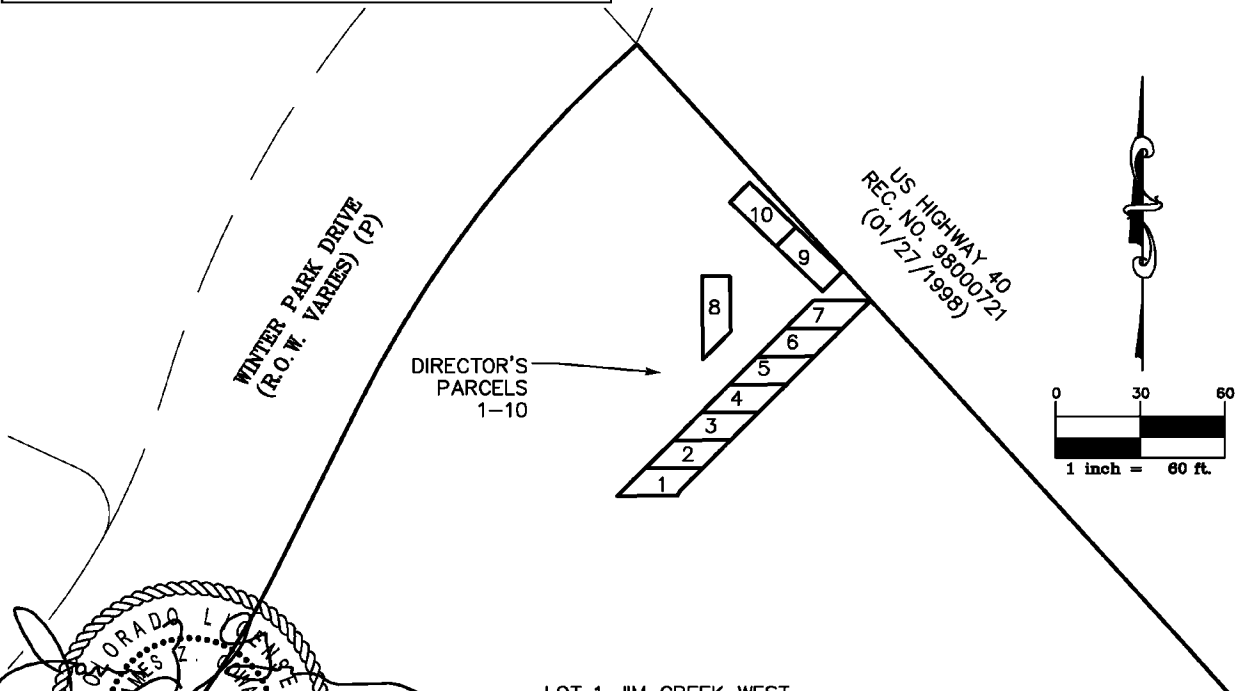
EXHIBIT "B-2"

LOCATED IN TOWNSHIP 2 SOUTH, RANGE 75 WEST OF THE 6TH P.M.,
TOWN OF WINTER PARK, COUNTY OF GRAND, STATE OF COLORADO

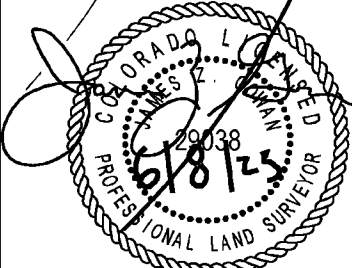
SHEET 1 OF 1



INITIAL DISTRICT BOUNDARIES MAP



LOT 1 JIM CREEK WEST
SUBDIVISION EXEMPTION
REC. NO. 2022004717
(5/27/2022)



JOB NUMBER: 23-79,746 DRAWN BY: M. VOYLES DATE: JUNE 2, 2023 **DP-MAP**
THIS IS NOT A "LAND SURVEY PLAT" OR "IMPROVEMENT SURVEY PLAT" AND THIS EXHIBIT IS NOT INTENDED FOR PURPOSES OF TRANSFER OF TITLE OR SUBDIVISIONS OF LAND. RECORD INFORMATION SHOWN HEREON IS BASED ON INFORMATION PROVIDED BY CLIENT.

Flatirons, Inc.
Land Surveying Services



655 FOURTH AVE
LONGMONT, CO 80501
PH: (303) 776-1733
FAX: (303) 776-4355
www.FlatironsInc.com

BY:VOYLES FILE:79746-DESCRIPTIONS.MXD LIDWG DATE:6/8/2023 11:51 AM